

## **APPENDIX C. WEATHER HISTORY AT THE LAUNCH SITE**

---

This appendix provides historical data on weather conditions at the launch site normally used for launching. Additional data may be available at the website provided by the National Data Buoy Center at: [http://www.ndbc.noaa.gov/station\\_page.php?station=51028](http://www.ndbc.noaa.gov/station_page.php?station=51028).

### **Station 51028**

---

Station 51028 is a weather buoy currently located at 0 degrees 0'1" N latitude, 153 degrees 54'46" W longitude, near the launch site. It is a 3-meter discus buoy with an ARES payload. It is owned and maintained by the National Data Buoy Center (NDBC).

Weather data is collected by the NDBC and is available for public access. The data collected includes wind direction, wind speed, wind gust, wave height, dominant wave period, atmospheric pressure, pressure tendency, air temperature and water temperature.

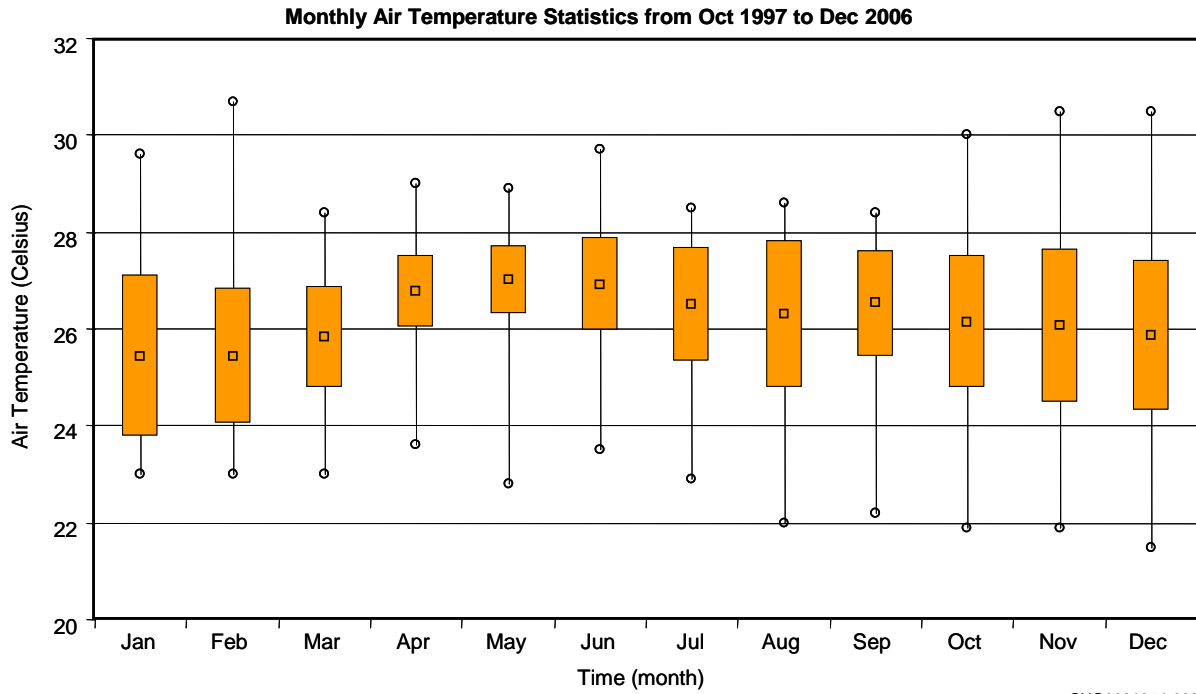
### **Historical Weather Data**

---

The following sections provide historical weather data gathered by the weather buoy at the launch site.

---

**Air Temperature** Air temperatures at the launch site over the period from October 1997 to December 2006 are charted in Figure C-1.

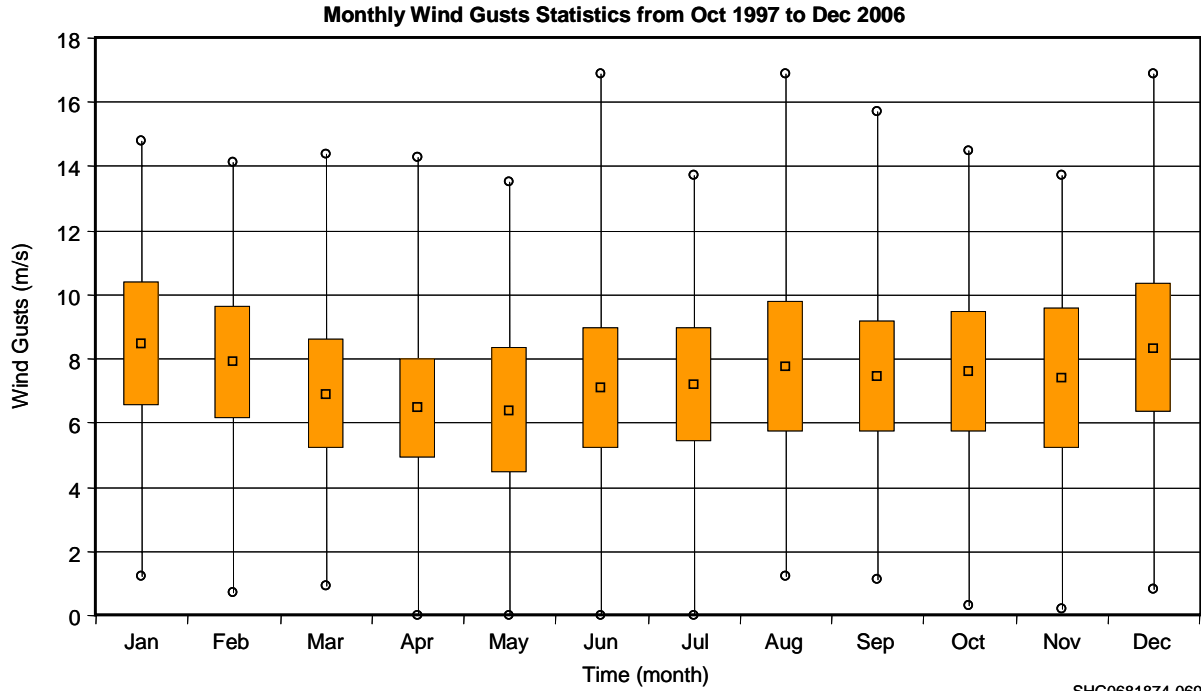


SHG0681874-068

*Figure C-1. Historical Air Temperatures*

## Wind Gusts

Peak wind gusts at the launch site over the period from October 1997 to December 2006 are charted in Figure C-2.

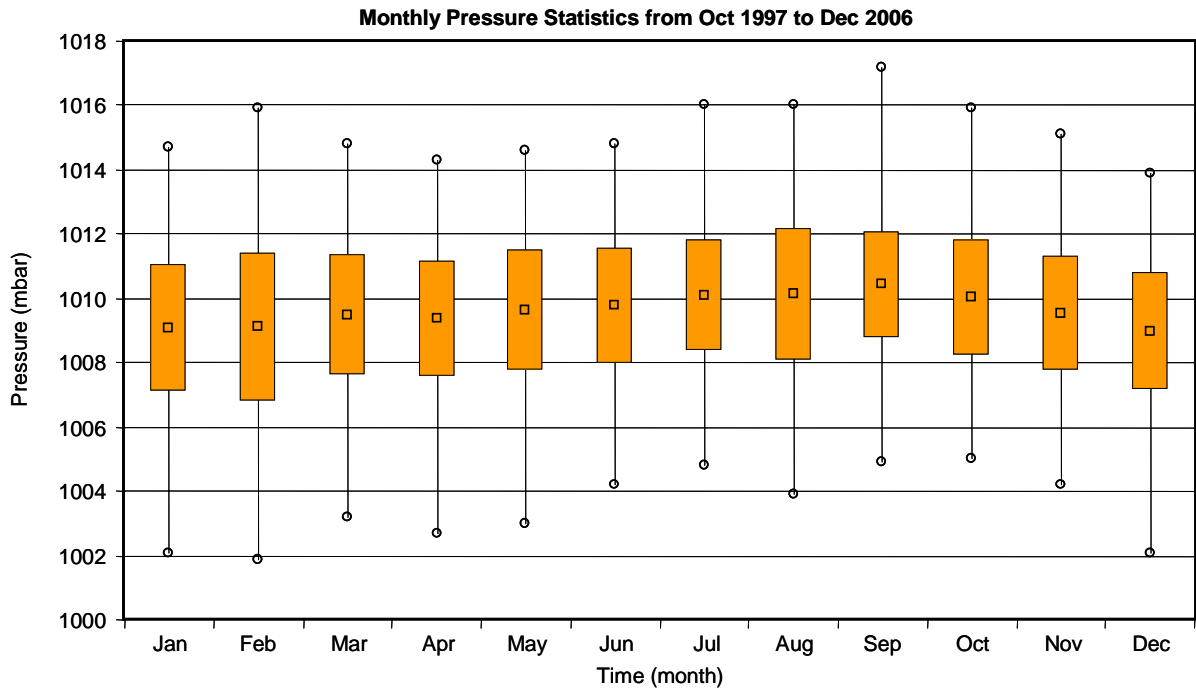


SHG0681874-069

*Figure C-2. Historical Wind Gusts*

**Atmospheric Pressure**

Atmospheric pressure at sea level at the launch site over the period from October 1997 to December 2006 is charted in Figure C-3.

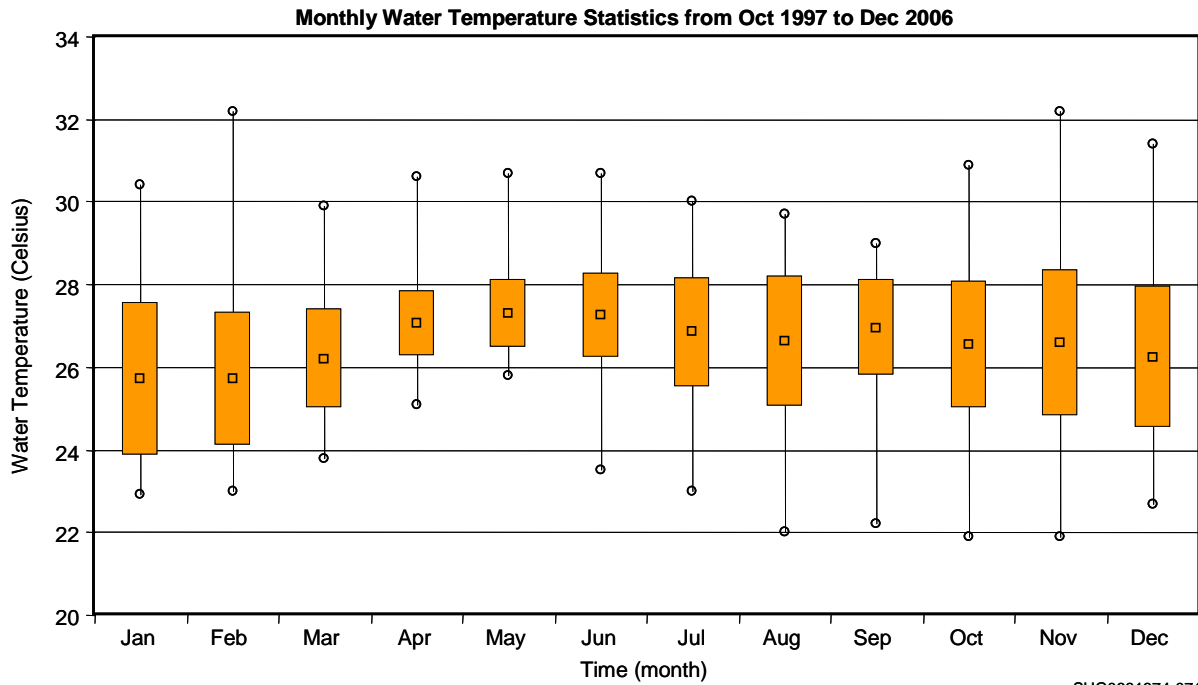


SHG0681874-070

*Figure C-3. Historical Atmospheric Pressure at Sea Level*

**Water  
Temperature**

Water temperatures at the launch site over the period from October 1997 to December 2006 are charted in Figure C-4.



SHG0681874-071

Figure C-4. Historical Water Temperatures

**Average Wind Speed**

Average Wind Speed, over 8 min averages as measured at the buoy, at the launch site over the period from October 1997 to December 2006 is charted in Figure C-5.

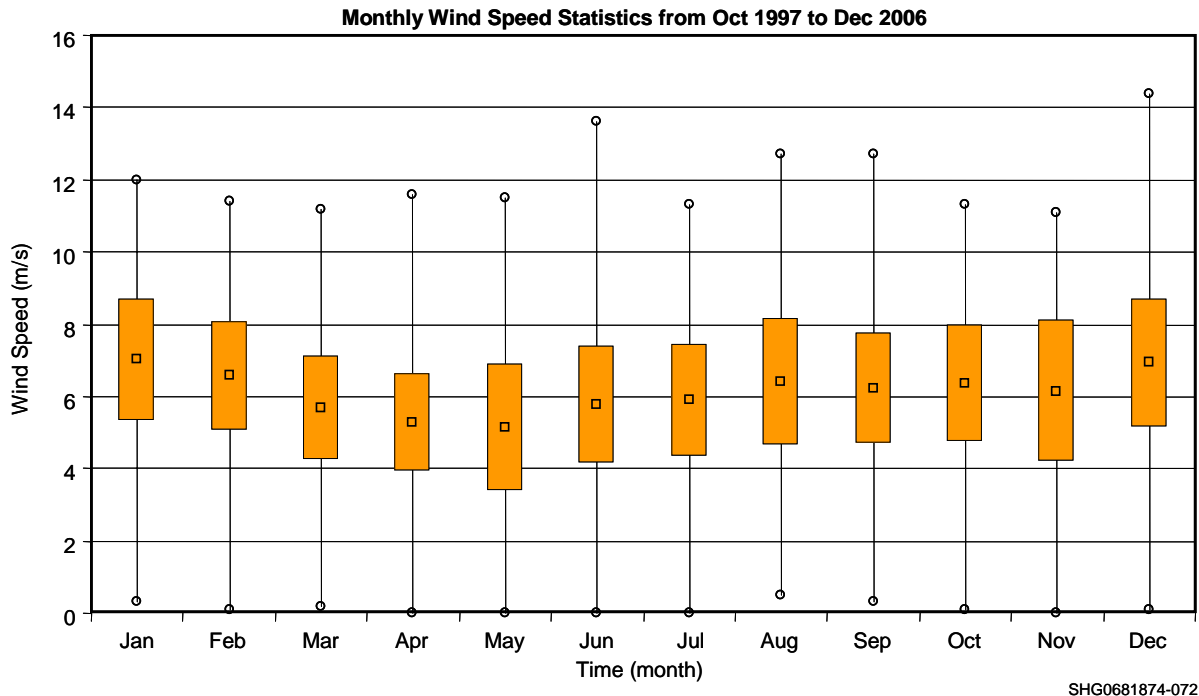


Figure C-5. Historical Average Wind Speed

SHG0681874-072